

# FREE SHUTTLE SERVICE

**Route 1 - SAMS CENTER** (Cherry St.)  
 Pick-up every 30 min. starting at 4:00PM  
 Drop-off/ Pick up at Bell Store parking lot  
 :15 & :45 min. after the hour.

**Route 2 - SHALMO YMCA** (S. Canal St.)  
 Pick-up every 10 & 40 min. after the hour  
 Starting at 4:00PM  
 Drop-off/Pick-up at US Post Office  
 (Poplar St. & S. Canal St.)  
 every 30 min.

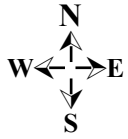
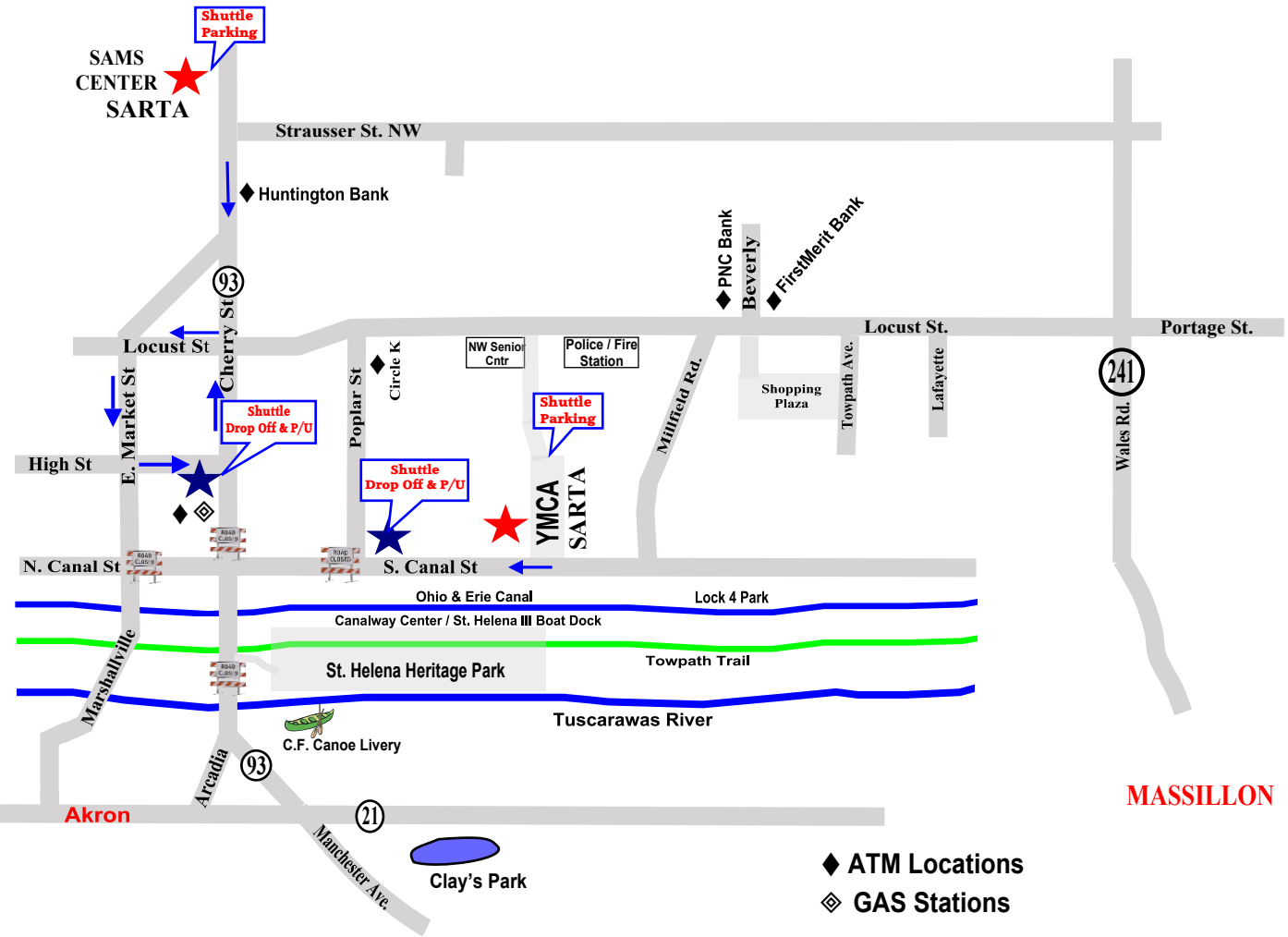


LOOK  
FOR THE SIGNS

★ Free SHUTTLE SERVICE  
& PARKING AREAS  
Fri. 4-11pm Sat. 4-11pm

★ SHUTTLE  
DROP-OFF/PICK-UP

Shuttle Service provided by:



MASSILLON

- ◆ ATM Locations
- ◆ GAS Stations